

Appendix A – Architectural Plans (including demolition plan)

Provided under separate cover

DEVELOPMENT APPLICATION - COVER SHEET

WAUCHOPE PUBLIC SCHOOL

2 WAUGH ST., WAUCHOPE, NSW 2446

Drawing List - Drawing Series (DA)				
Drawing Number	Drawing Name	Current Revision	Revision Description	Current Revision Date
DA001	Cover Sheet	A	DA Issue	01.09.2017
DA002	Existing Site Plan	A	DA Issue	01.09.2017
DA003	Proposed Site Plan	A	DA Issue	01.09.2017
DA004	Proposed Demolition Plan	A	DA Issue	01.09.2017
DA005	Access & Circulation Plan	A	DA Issue	01.09.2017
DA006	Ground Floor Plan	A	DA Issue	01.09.2017
DA007	Level 1 Floor Plan	A	DA Issue	01.09.2017
DA008	Roof Plan	A	DA Issue	01.09.2017
DA009	External Elevations - Sheet 1	A	DA Issue	01.09.2017
DA010	External Elevations - Sheet 2	A	DA Issue	01.09.2017
DA011	Building Sections - Sheet 1	A	DA Issue	01.09.2017
DA012	Building Sections - Sheet 2	A	DA Issue	01.09.2017
DA013	Shadow Diagram - Proposed - Summer & Winter	A	DA Issue	01.09.2017
DA014	External Material Palette	A	DA Issue	01.09.2017
DA015	3-d Views - Sheet 1	A	DA Issue	01.09.2017
DA016	3-d Views - Sheet 2	A	DA Issue	01.09.2017
DA017	3-d Views - Sheet 3	A	DA Issue	01.09.2017

Grand total: 17





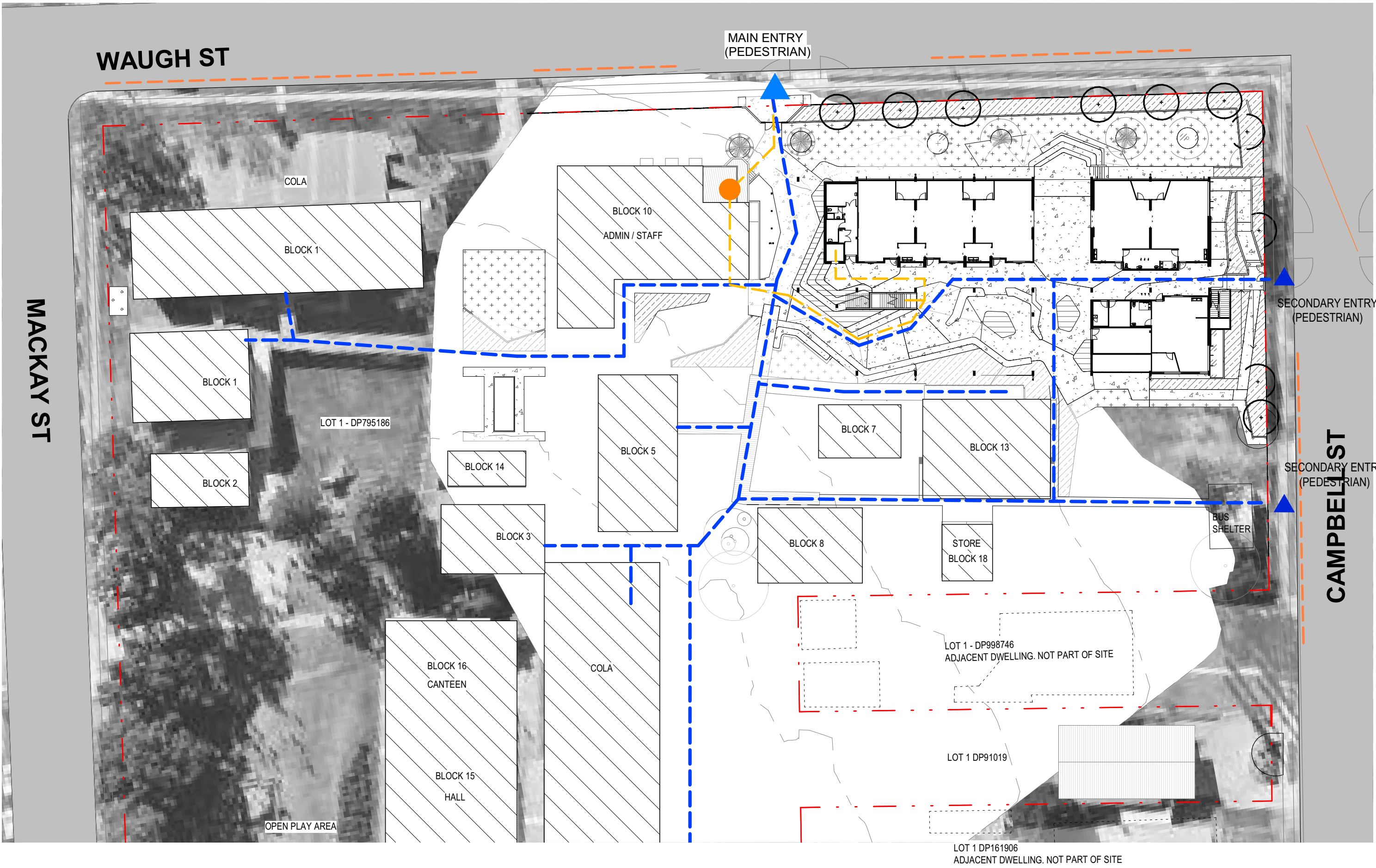
1 Existing Site Plan - DA
3000 1:500



1 Proposed Site Plan - DA
1:500

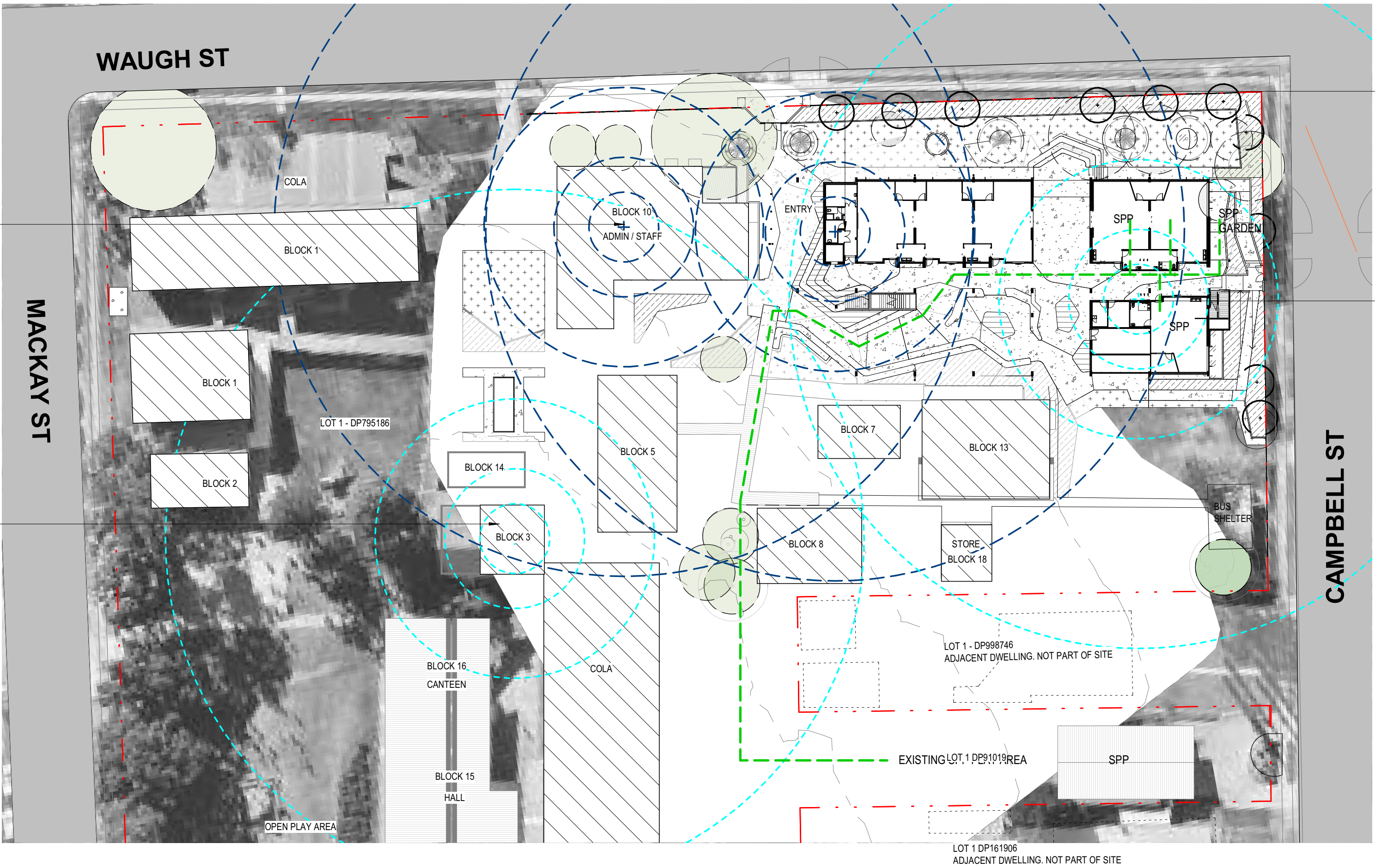


1 Proposed Demolition Plan - DA
3000 1:500



- LEGEND - DIAGRAMS**
- ▲ MAIN ENTRY
 - ▲ SECONDARY ENTRY
 - VISITOR ADMINISTRATION ENTRY
 - VISITOR CIRCULATION (TO NEW BUILDING)
 - STUDENT CIRCULATION
 - SSP CIRCULATION
 - BUS ZONE - PICK UP / DROP OFF
 - AMENITIES - STAFF (5m, 10m, 20m and 50m)
 - AMENITIES - STUDENTS (5m, 10m, 20m and 50m)

1 Entry and Circulation
1:500



2 Amenities
1:500

GROSS FLOOR AREA
CALCULATIONS

GROUND FLOOR: 734m²

LEVEL 1: 745m²

TOTAL GFA: 1479m²



1 Ground Floor Plan
3000 1:200



Education



CONRAD GARGETT ANCHER MORTLOCK WOOLLEY

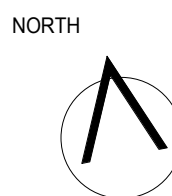
PROJECT
Wauchape Public School, 2 Waugh St, Wauchape NSW 2446

INTERNAL PROJECT No:
16 398

DATE:
01.09.2017

SCALE @A1:
1 : 200

© CONRAD GARGETT ANCHER MORTLOCK WOOLLEY
mail@conradgargett.com.au ABN 49 325 121 350
DO NOT SCALE DRAWING & VERIFY ALL DIMENSIONS AND LEVELS ON SITE
NOMINATED ARCHITECT: BRUCE WOLFE NSW Reg. 6969



DRAWING
Ground Floor Plan

REV DESCRIPTION
A DA Issue

DATE APPD
01.09.2017 PR

10 0 10 20 30 40 50
SCALE
1: 1 mm

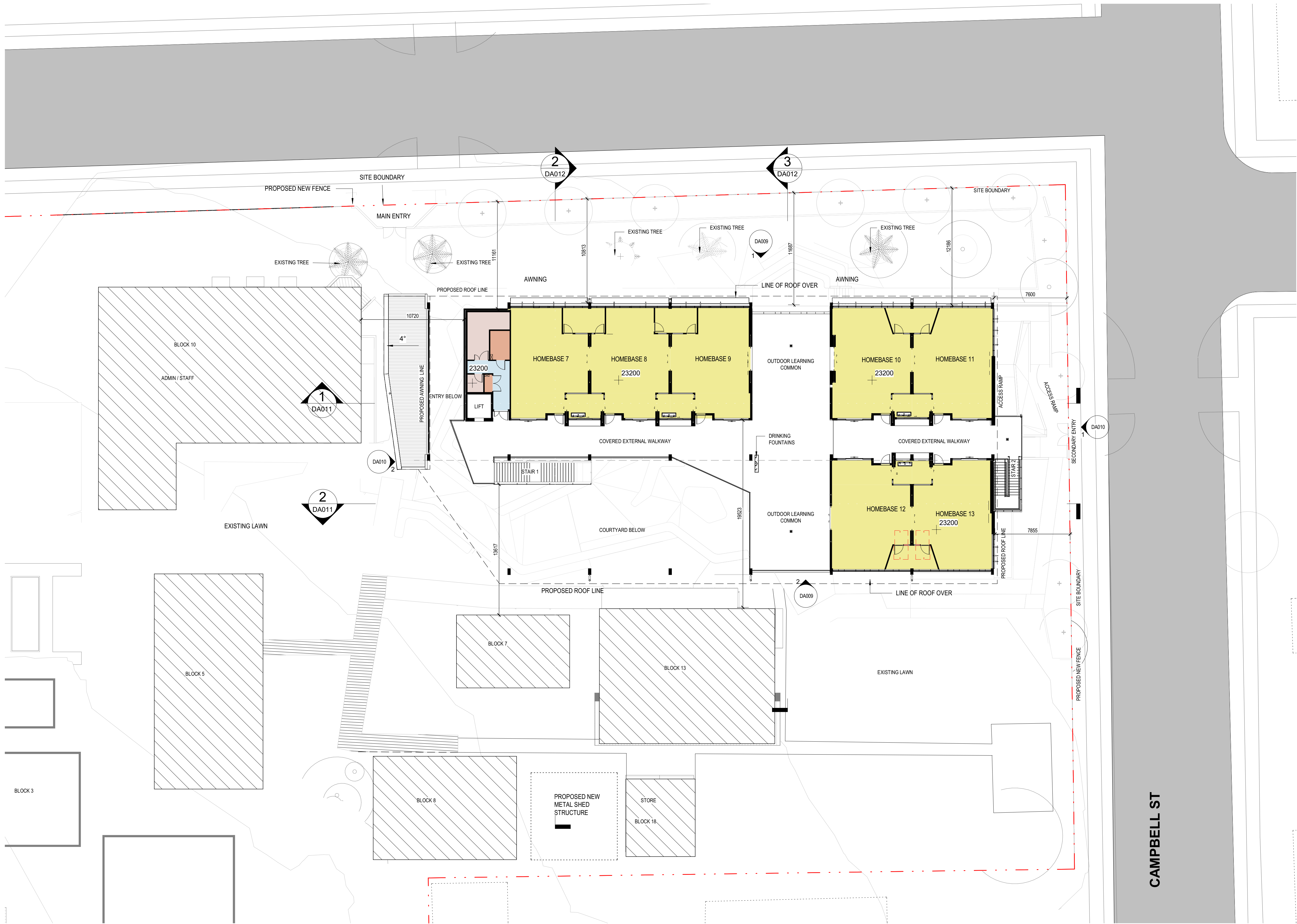
SCHOOL ID BLDG ID STAGE DISCIPLINE DOC ID DRAWING No: REV:
WOS - 01 - DD - AR - DR - DA006 - A

GROSS FLOOR AREA
CALCULATIONS

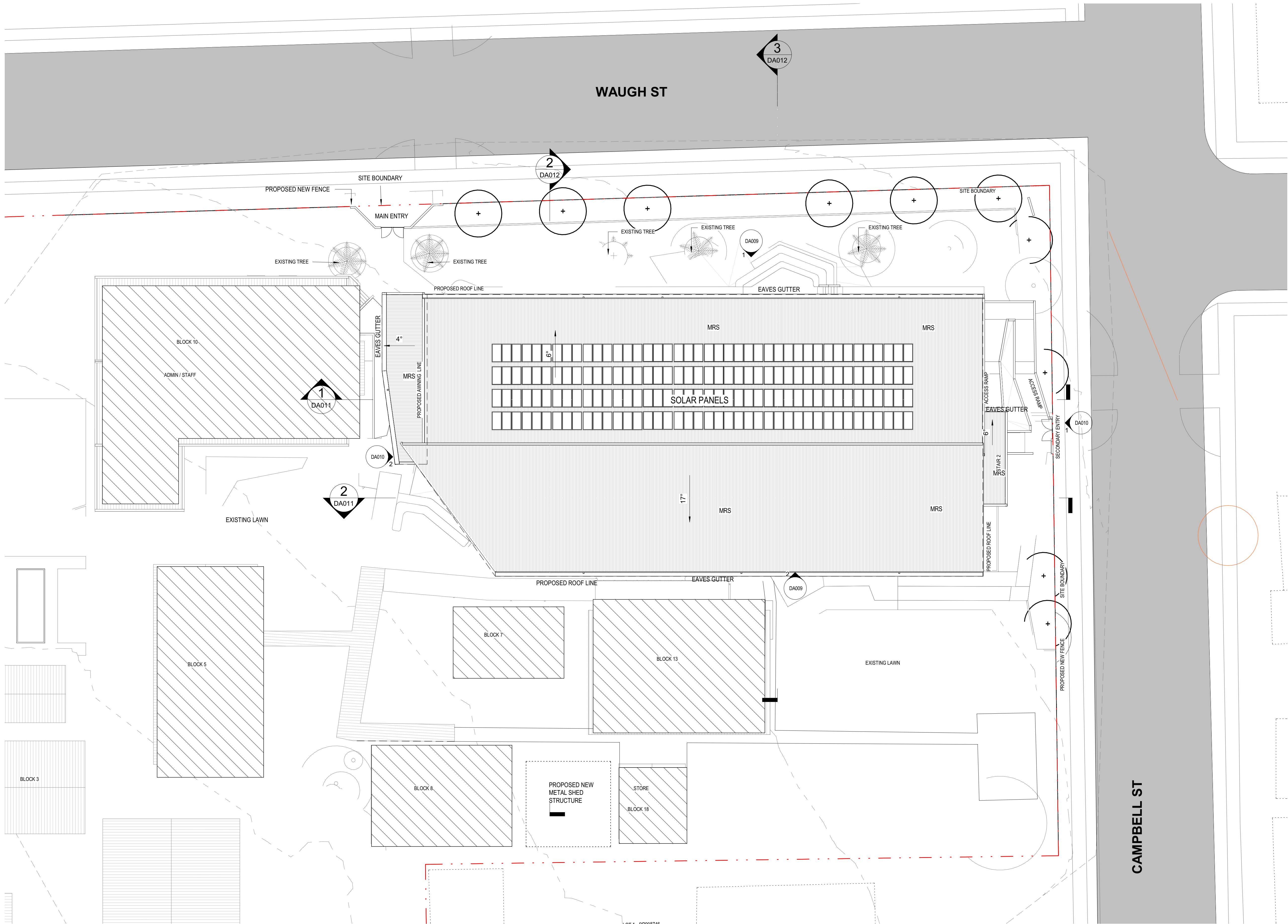
GROUND FLOOR: 734m²

LEVEL 1: 745m²

TOTAL GFA: 1479m²

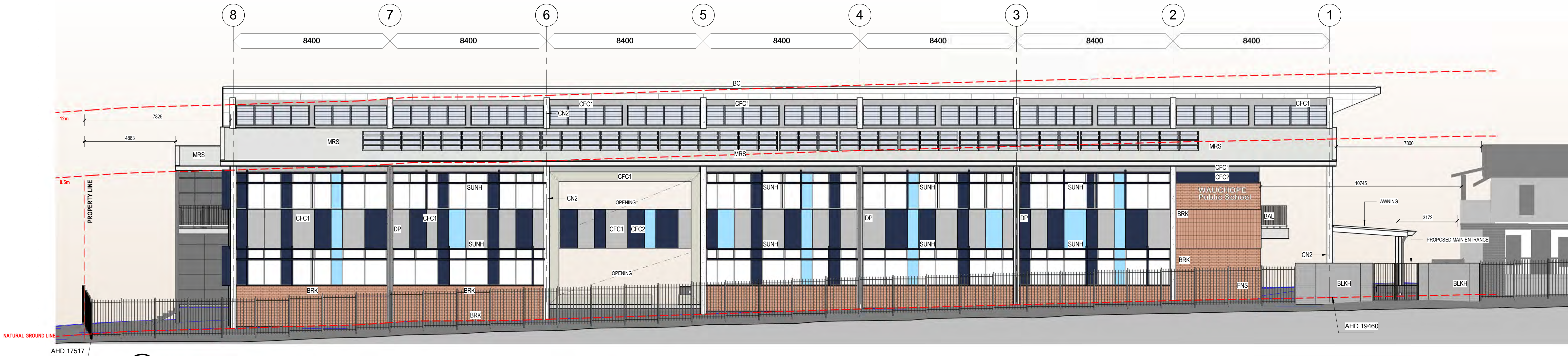


1 Level 01 Plan
3000 1:200

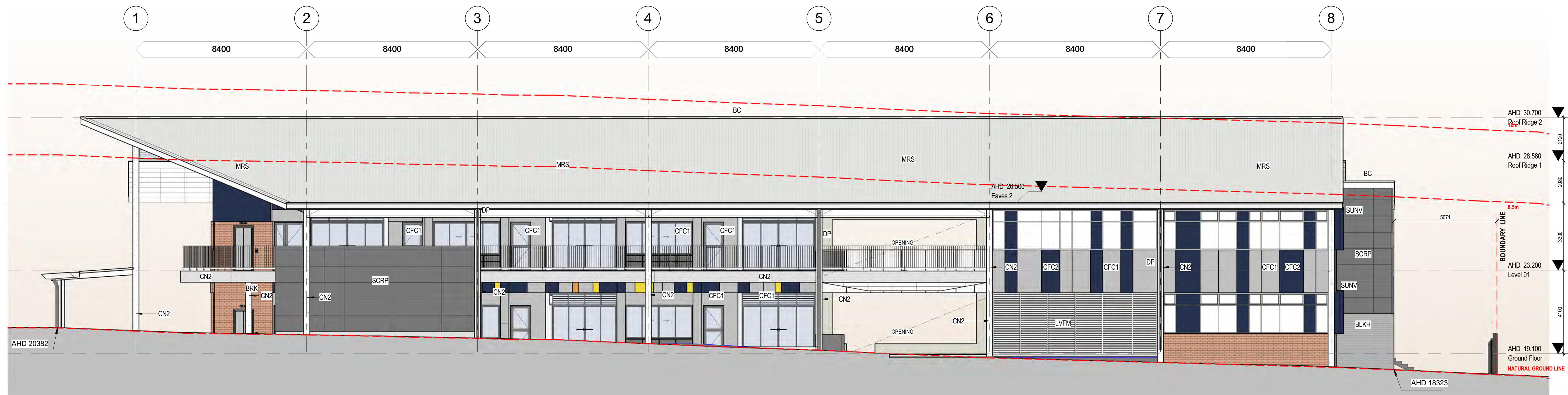


1 Roof Plan - DA
3001 1:200

COLA



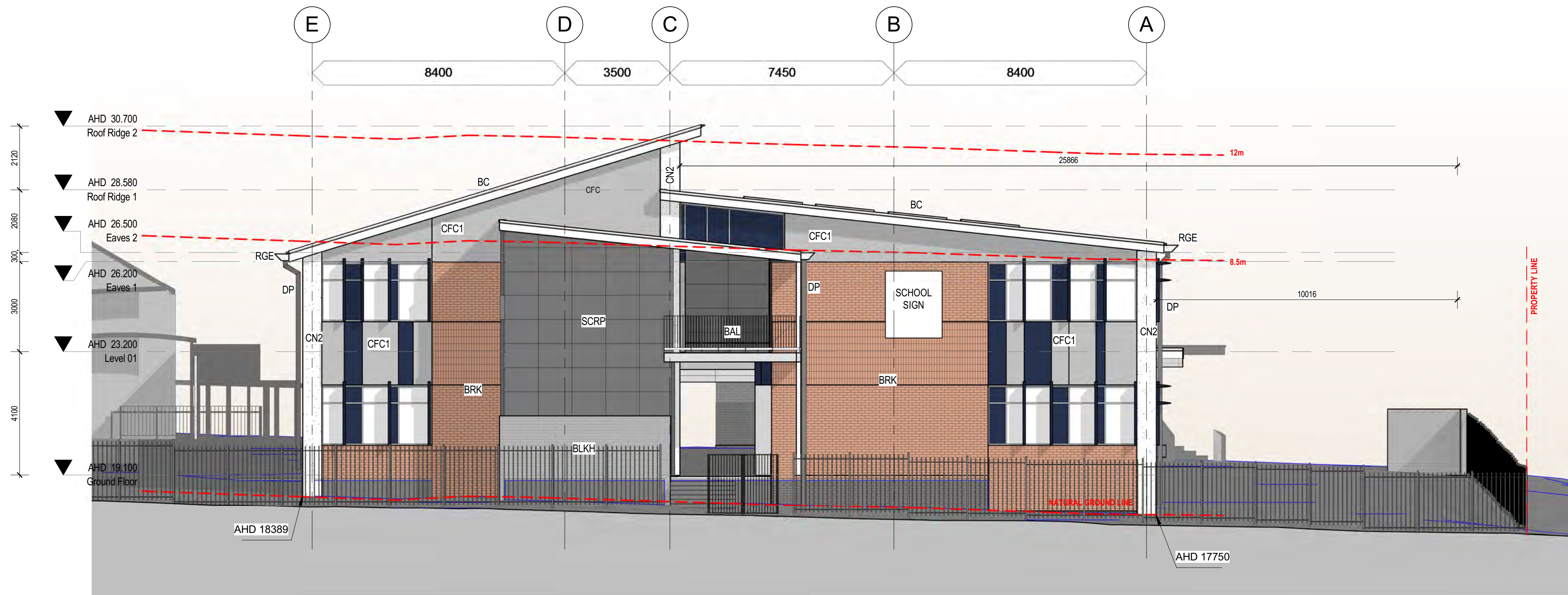
1 North Elevation
DA006 1:100



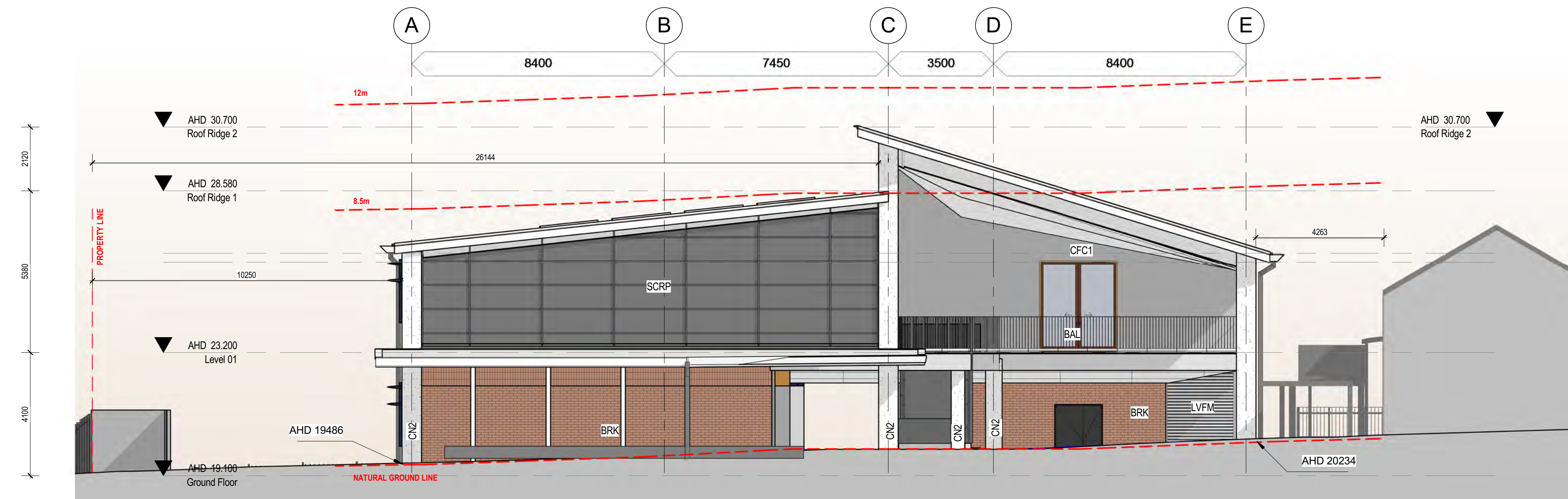
2 South Elevation
DA006 1:100

MATERIAL LEGEND	
CODE	DESCRIPTION
BAL	BALUSTRADE, WITH HANDRAIL (HDG)
BC	BARGE CAPPING
BLKH	BLOCKWORK, HALF HEIGHT, SEALED
BRK	BRICKWORK
CFC1	COMPRESSED FIBRE CEMENT (MATT PRE-FINISH)
CFC2	COMPRESSED FIBRE CEMENT (TEXTURED PRE-FINISH)

MATERIAL LEGEND	
CODE	DESCRIPTION
CN2	CONCRETE, AS 3610 CLASS 2 FORMED
DP	DOWN PIPE
FNS	FENCE, SECURITY
LVFM	LOUVRES, FIXED METAL (GRILLE)
MRS	ROOF SHEETING, METAL (STRAMIT LONGSPAN)
SCRP	SCREEN, PIC PERF
SUNH	SUNSHADE, HORIZONTAL (ALUMINIUM)
SUNV	SUNSHADE, VERTICAL (ALUMINIUM)



1 East Elevation
DA006 1:100

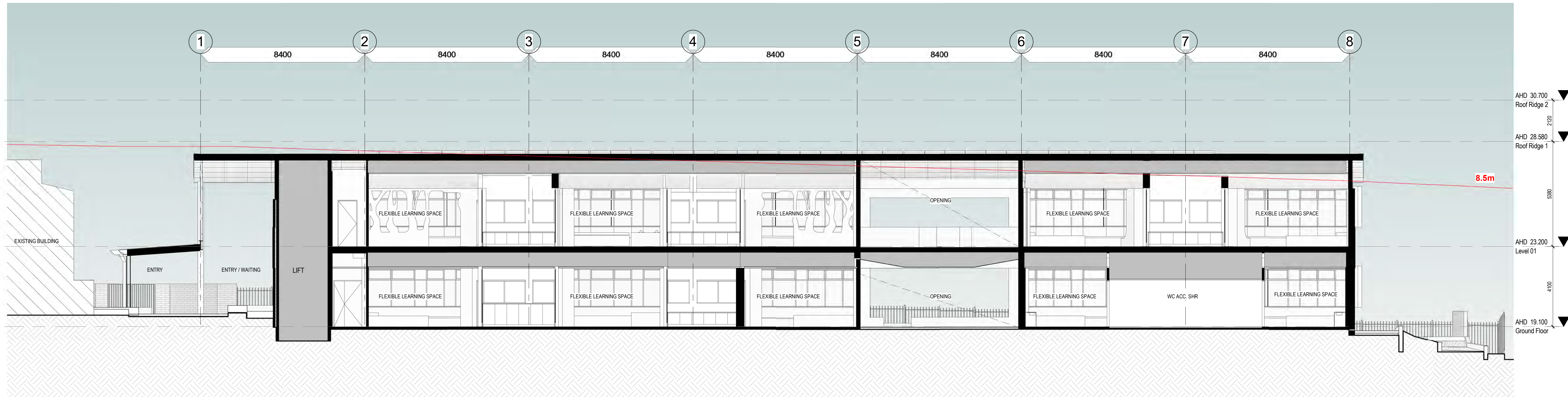


2 West Elevation
DA006 1:100

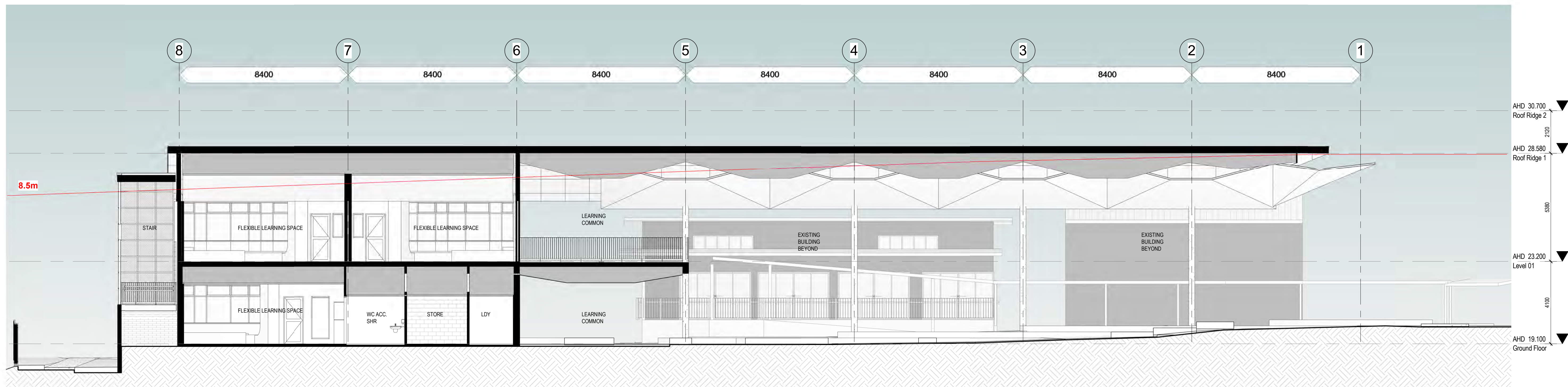
MATERIAL LEGEND

CODE	DESCRIPTION
BAL	BALUSTRADE, WITH HANDRAIL (HDG)
BC	BARGE CAPPING
BLKH	BLOCKWORK, HALF HEIGHT, SEALED
BRK	BRICKWORK
CFC1	COMPRESSED FIBRE CEMENT (MATT PRE-FINISH)
CN2	CONCRETE, AS 3610 CLASS 2 FORMED
DP	DOWN PIPE
RGE	ROOF GUTTER, EAVES
SCRCP	SCREEN, PIC PERF

PRELIMINARY

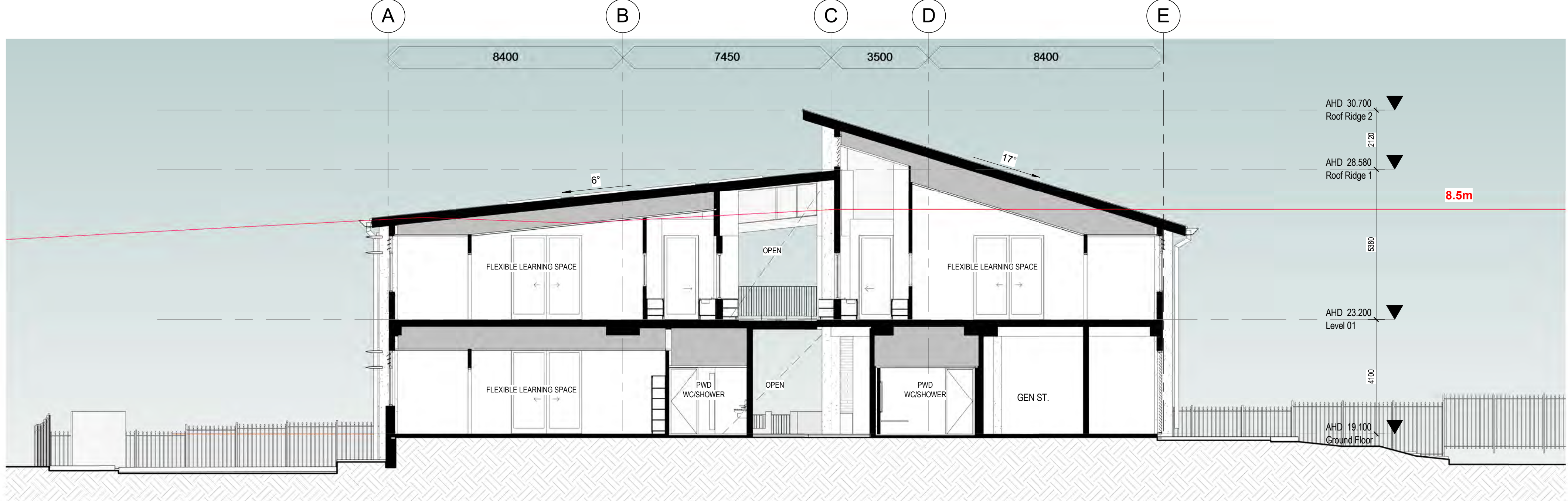


1 Building Section 1 - DA
DA006 1:100

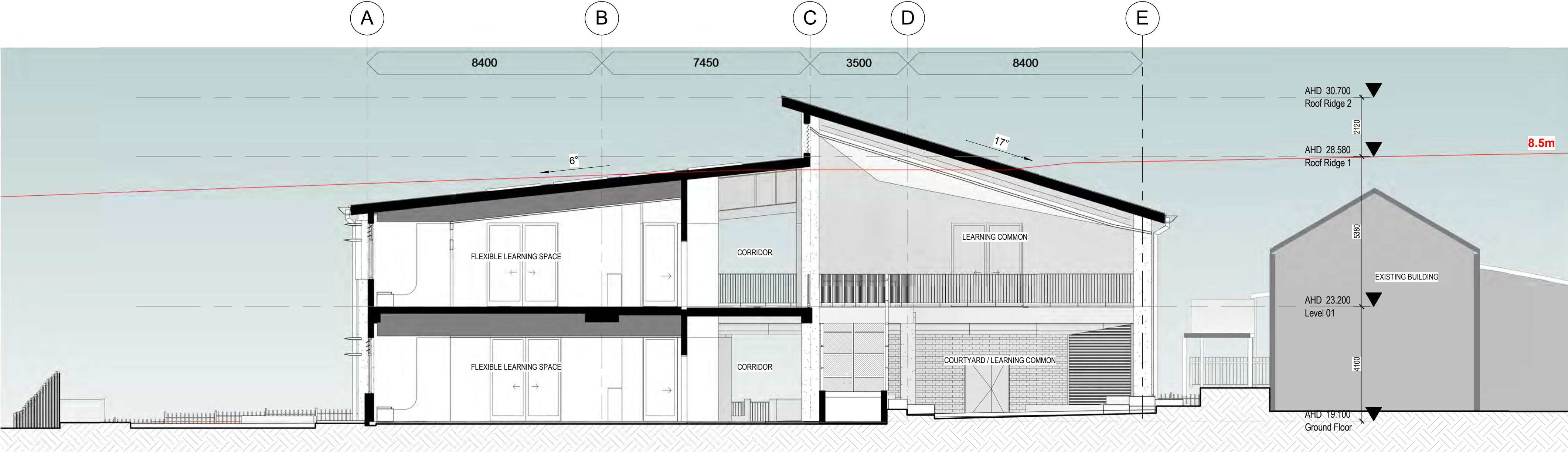


2 Building Section 2 - DA
DA006 1:100

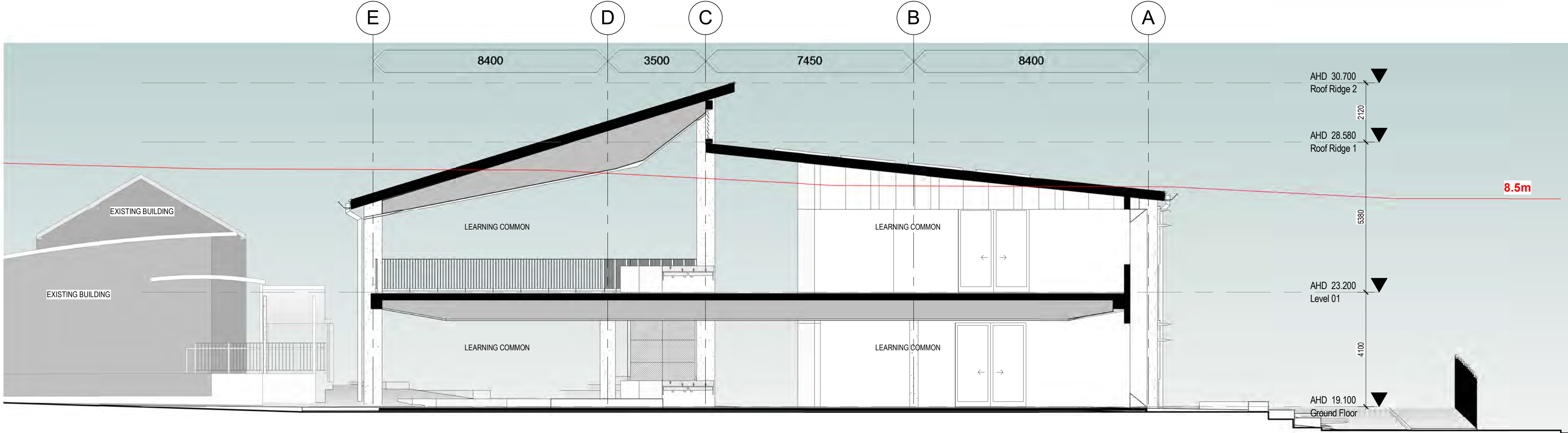
PRELIMINARY



1 Building Section 3
SK003 1:100

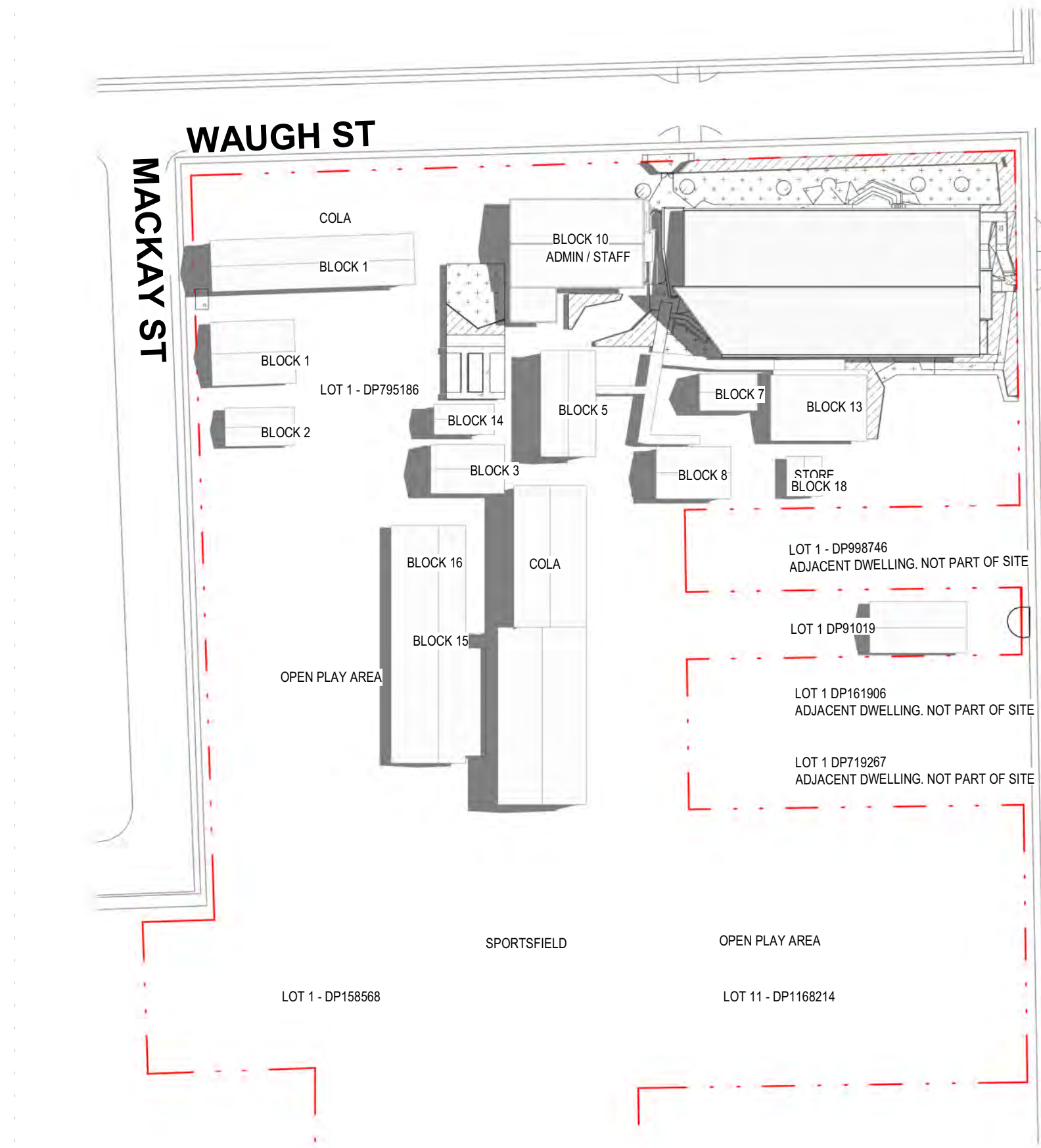


2 Building Section 4
DA006 1:100

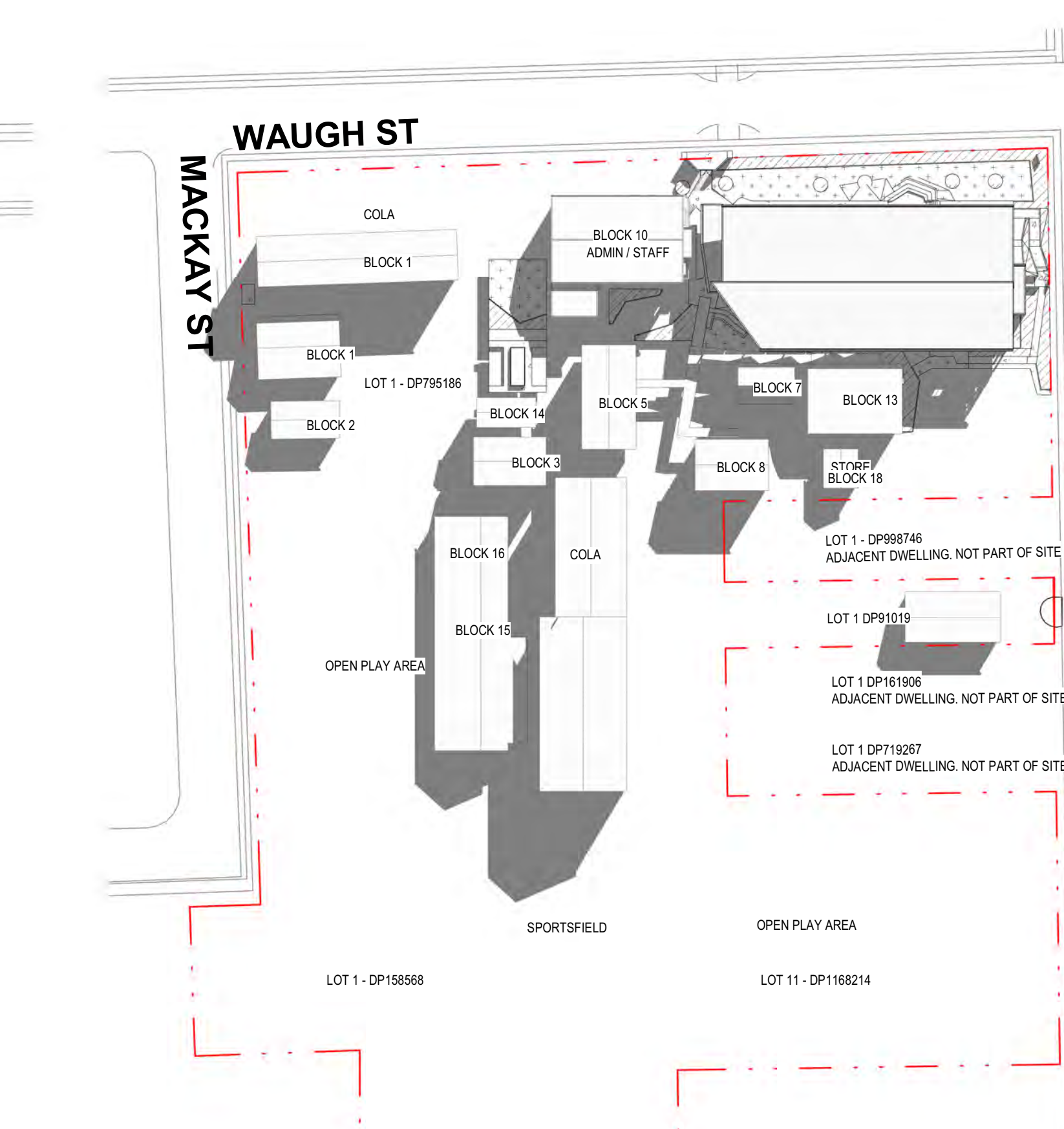


3 Building Section 5
DA006 1:100

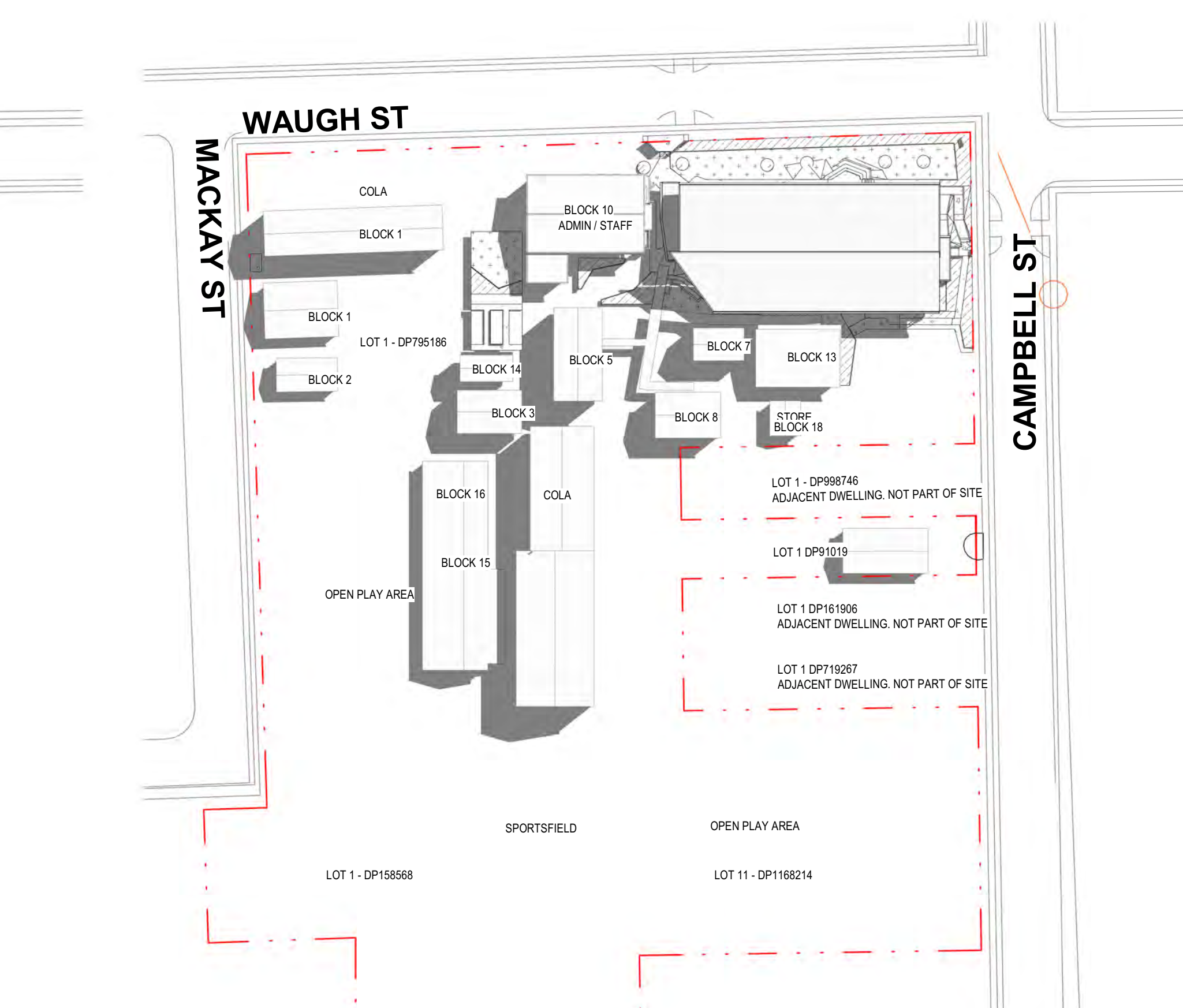
PRELIMINARY



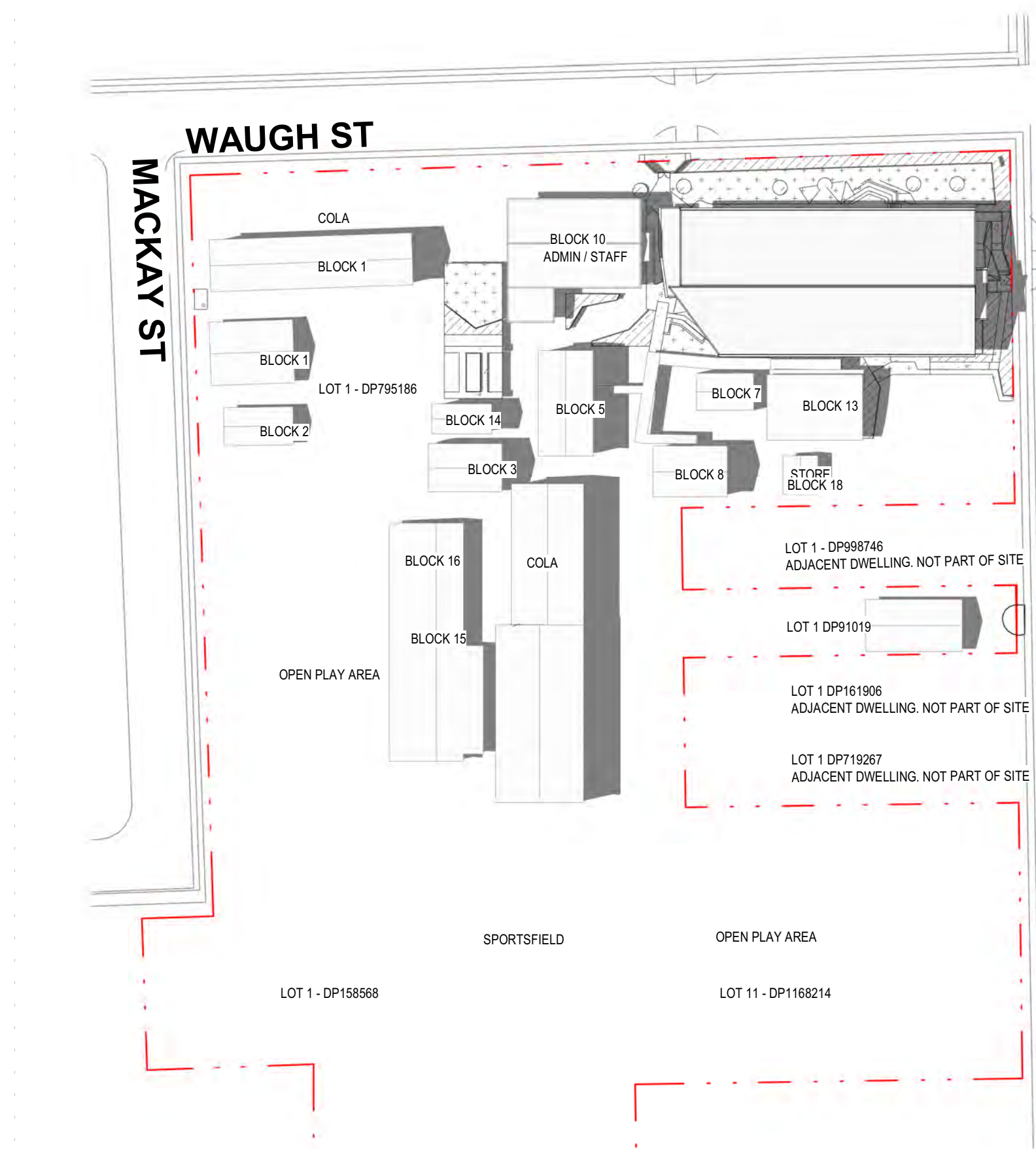
2 Roof Plan Shadow Diagram (Proposed) - 21st Dec 9am
1:1000



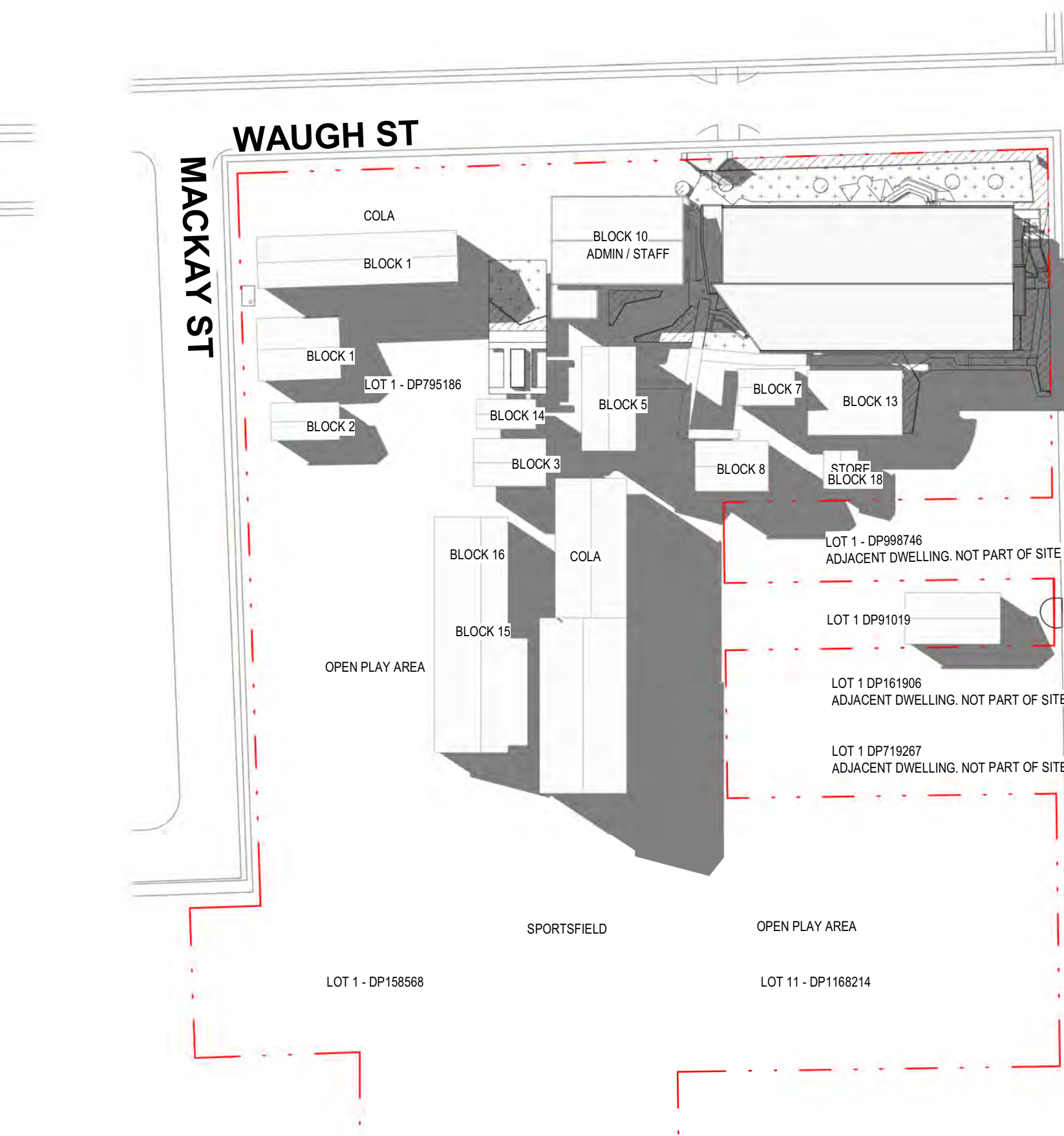
4 Roof Plan Shadow Diagram (Proposed) - 21st June 9am
1:1000



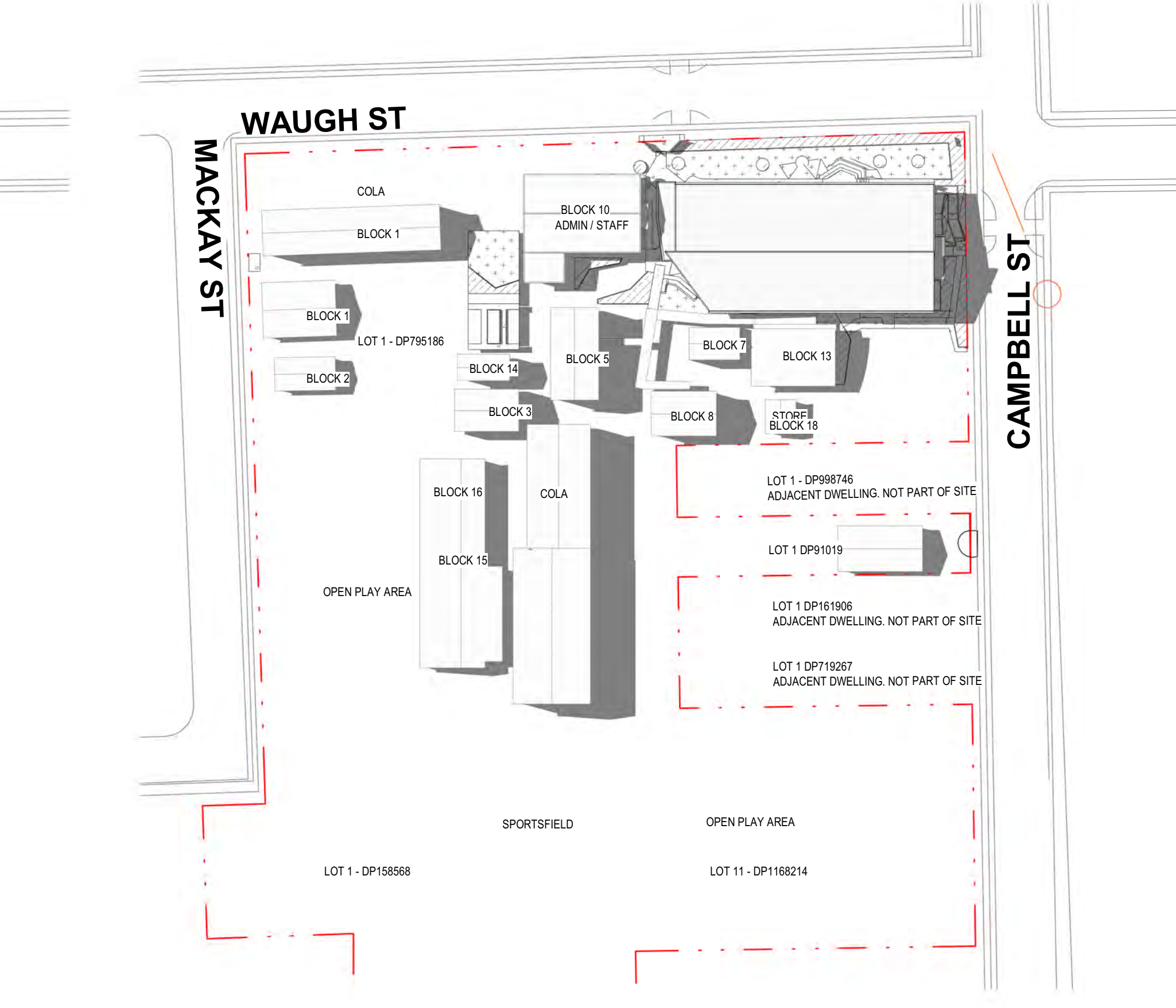
6 Roof Plan Shadow Diagram (Proposed) - Equinox 9am
1:1000



1 Roof Plan Shadow Diagram (Proposed) - 21st Dec 3pm
1:1000

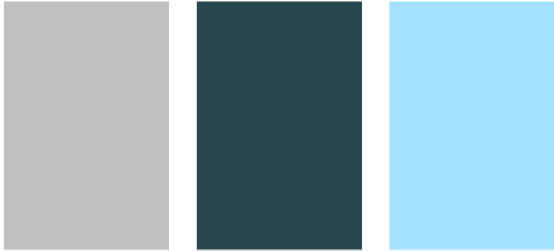


3 Roof Plan Shadow Diagram (Proposed) - 21st June 3pm
1:1000



5 Roof Plan Shadow Diagram (Proposed) - Equinox 3pm
1:1000

EXTERIOR MATERIAL PALETTE



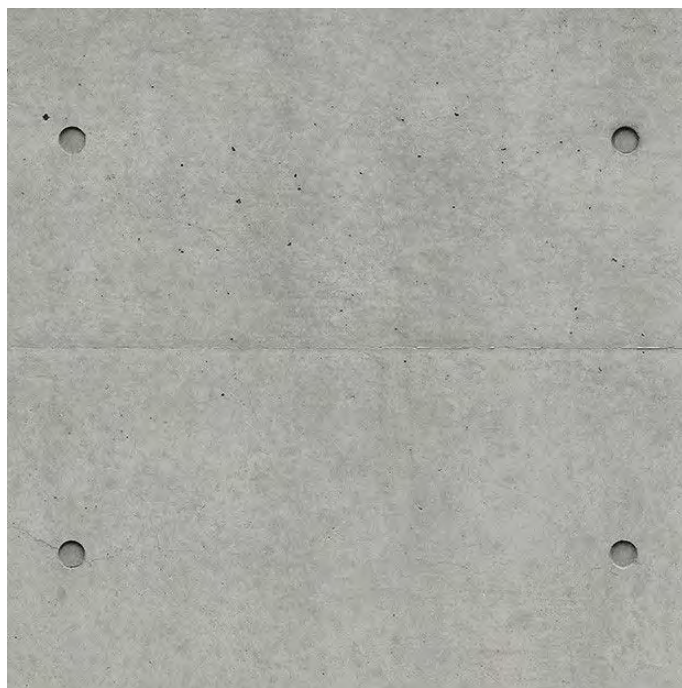
1. CFC PREFINISHED FACADE
PANEL (street facing)
- BARESTONE - matt finish
CFC1



2. CFC PREFINISHED FACADE
PANEL (courtyard facing)
- Equitone Pictura - matt finish
CFC2- 6



3. BRICK
- to match existing on site
BRK



4. CONCRETE COLUMN / SOFFIT
- Off Form Concrete finish
CONC



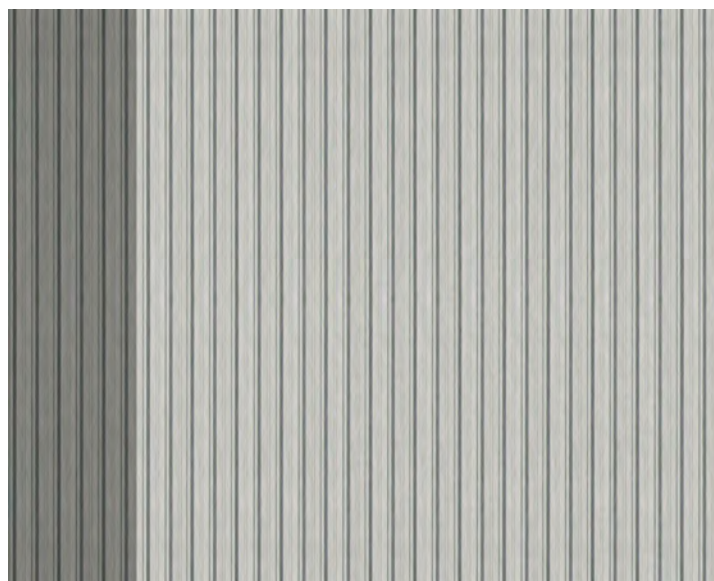
5. BALUSTRADE
- Galvanised steel balustrade
BAL



6. WINDOW / DOOR FRAME
- clear anodised aluminium



7. SCREEN, PERFORATED METAL
- Pic Perf, Locker Group
SCRP



8. ROOF
- Stramit Longspan Metal Roof
MRS



9. ROOF SOFFIT
- CFC Sheet PREFINIHSSED -
Cemintel
CFC7



10. SOFT FALL
- Regupol - Everroll Vitality Range



10. SUNSHADE, HORIZONTAL
- Aluminium Blades
**LOUVRECLAD
SUNH**



2 External Material Palette - DA



WAUGH ST. VIEW - ENTRY



WAUGH STEETSCAPE VIEW 01



COURTYARD VIEW



CORNER OF CAMPBELL ST AND WAUGH ST VIEW



CAMPBELL ST STEETScape VIEW 01

PRELIMINARY

Appendix B – Landscape Plans

Provided under separate cover

Wauchope Public School

Wauchope NSW



CONRAD GARGETT

Brisbane Studio

Level 26 / 240 Queen Street
Brisbane Qld 4000

Telephone +61 7 3229 3555
Facsimile +61 7 3221 7878
mail@conradgargett.com.au
www.conradgargett.com.au

Nominated architect: Bruce Wolfe Nsw Reg. 6969

Contents

Cover Page

Contents

LA001 Design Rationale

LA002 Learning Experiences

LA003 Landscape Design Inspiration

LA004 Landscape Design Intent

LA005 Functional Diagram

LA006 Landscape Concept Plan

LA007 Materials Palette - Hardscape

LA008 Materials Palette - Softscape

LA009 Tree Retention and Removal Plan

Revision	Description	Issue Date	Prepared By	Approved By
A	Development Application	01/09/2017	Kate Slack	Katharina Nieberler-Walker

This report is produced by CONRAD GARGETT for NSW Education.

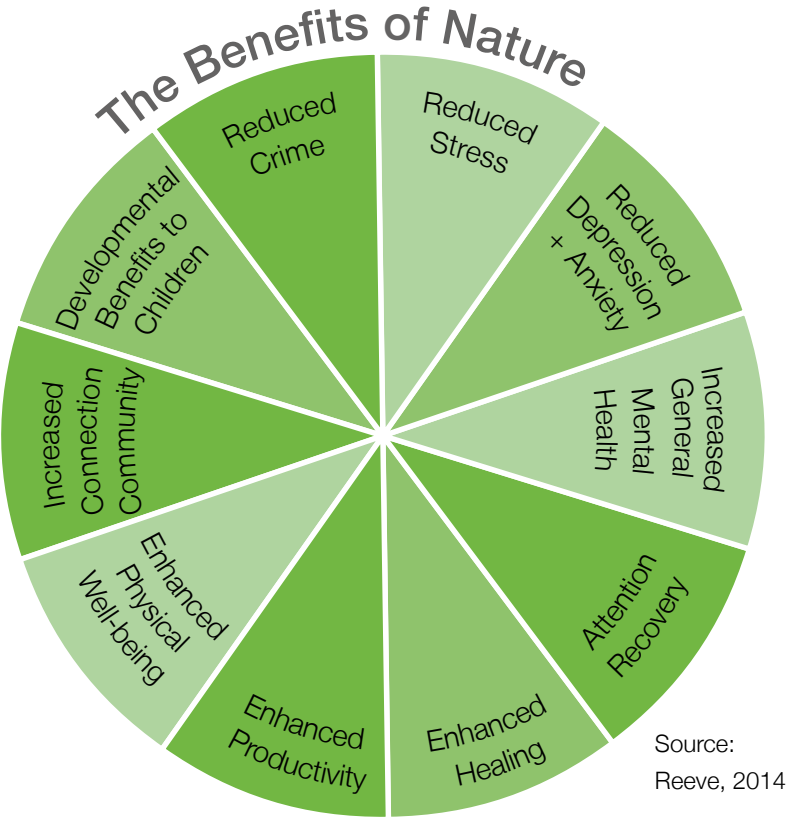
SCHOOL BACKGROUND

Wauchope Public School is located in the mid north coast of New South Wales. The school is one of the largest primary schools in the Port Macquarie District.

Staff and Students are a typical cross section of rural Australia. The school's population is drawn from a wide variety of settings such as town, outlying farming areas and small rural acreages and the Staff and Students are a typical cross section of rural Australia.

Despite its size, the needs of the individual are never forgotten. The school promotes caring and tolerant attitudes in students and we encourage all students to excel. Our school maintains and fosters excellence through a broad range of academic, social and behavioural programs. Learning experiences are designed to teach the basic skills, impart knowledge and develop the values required to cope with change whilst contributing in a meaningful way to our local and wider society. The schools population is drawn from a wide variety of settings such as town, outlying farming areas and small rural acreages. As one of the focal points of the community we are proud of the leading role we play.

<http://www.wauchope-p.schools.nsw.edu.au/our-school>



THE LANDSCAPE DESIGN LENS



The intent of the design is to create a landscape that will provide both a PLACE FOR LEARNING and a PLACE FOR NATURE for all staff, students, teachers, guardians and visitors.

DESIGN OBJECTIVE - C.A.R.E.

Create landscape spaces that encourage interaction and communication among children and that is conducive to meeting or gathering for students and staff of different ages, social and cultural backgrounds.

Activate multi-functional and flexible spaces that can accommodate various functions and activities, allowing children to explore, engage and reach beyond their comfort zone.

Remake outdoor learning environments that enhance the well-being of children and staff, forming an integral part of teaching and learning, and reinforcing positive behaviour among children with spaces for reflection and taking time-out.

Engage students and staff in preserving the school's native and green environment by providing a place that showcases the natural environment.



Learning Experiences

Opportunities within the landscape for many things-

- DISCOVERY
- STIMULATING
- PARTICIPATION
- RELAXATION
- GEOGRAPHY
- GEOMETRY
- CALCULATIONS
- ACADEMICS
- CULTURE
- TECHNOLOGY
- RESOURCES
- MAPPING
- DIGITAL MEDIA
- ARTS
- AMENITY
- INCLUSIVE
- TIME OF DAY
- NUMBERS
- WELL-BEING
- SOCIAL SKILLS
- POETRY
- EXPERIMENTS
- SPORTS
- COMMUNITY EVENTS
- DIMENSIONS
- OUTDOOR ACTIVITIES
- PASSIVE AND ACTIVE RECREATION
- COLOUR
- HABITAT
- REFUGE
- ANIMALS AND PLANTS
- APPRECIATION
- MUSIC & DANCE
- EXPRESSION



DESIGN INSPIRATION

‘From the Mountains to the Sea’

Wauchope, historically a timber town is now surrounded by rich farmland. It is a gateway to hinterland national parks and rainforests and located on a bend of the Hastings River as it winds its way to the sea at Port Macquarie.



LANDSCAPE DESIGN INTENT

Design intent for Wauchope Public School is to create and explore an environment that offers teaching staff and students with flexible spaces that best meet teaching, learning and play requirements.

Key areas of focus within the proposed design include a suitable school entry that creates a sense of arrival and sense of place that fosters what the values that Wauchope School promotes.

The central courtyard will be functional, practical and adaptable to learning and passive play whilst overlooking and connecting to 'green space' at the heart of the school.

Etched from this heart will be individual nodes that link together with a coherent design language that sits outside our scope of work.



Outdoor nature based learning areas with productive gardens

Plaza entry to front door of school to mark entry, create a sense of arrival and provide waiting areas



Existing heritage palms to be retained and protected.

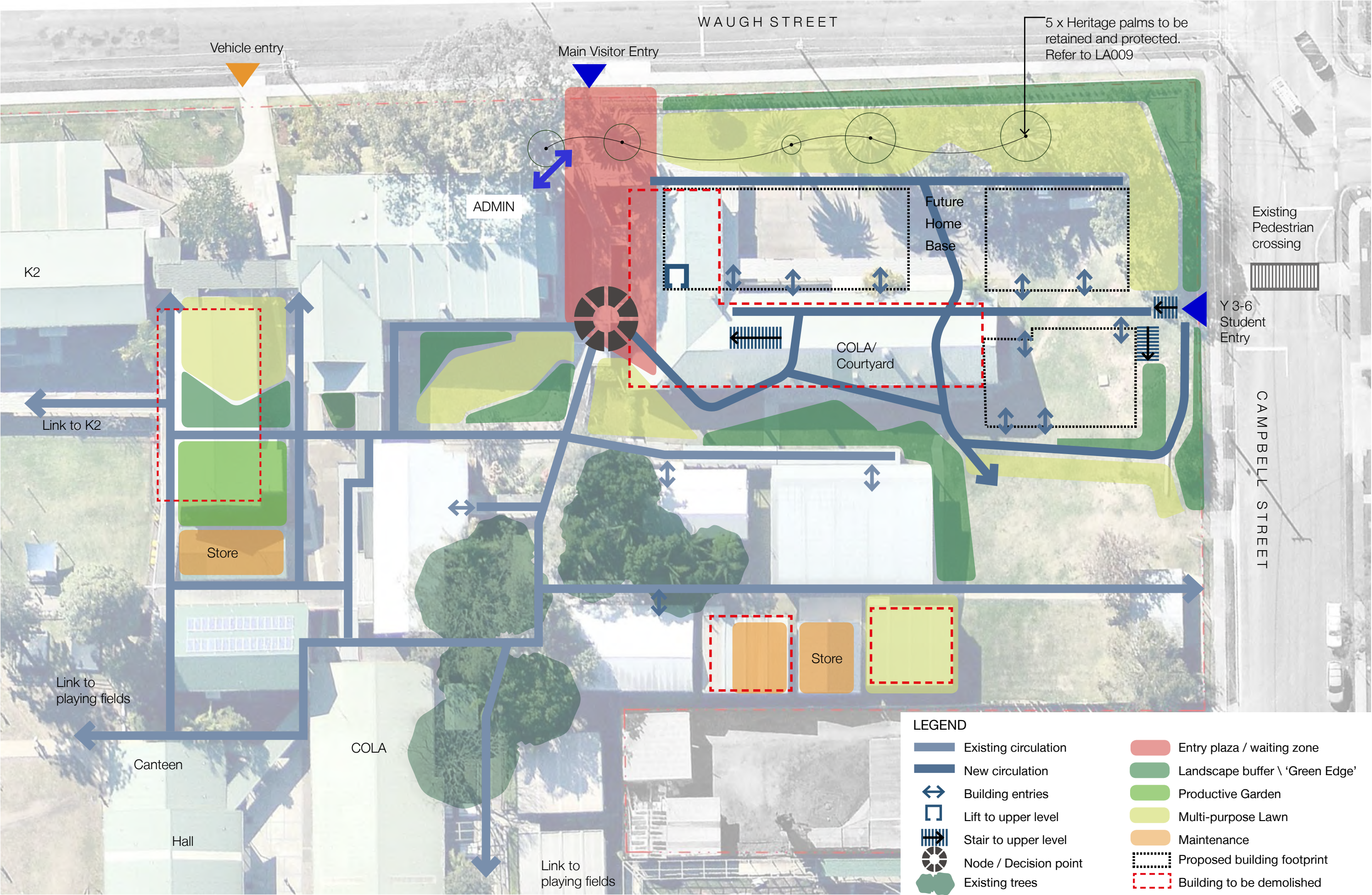


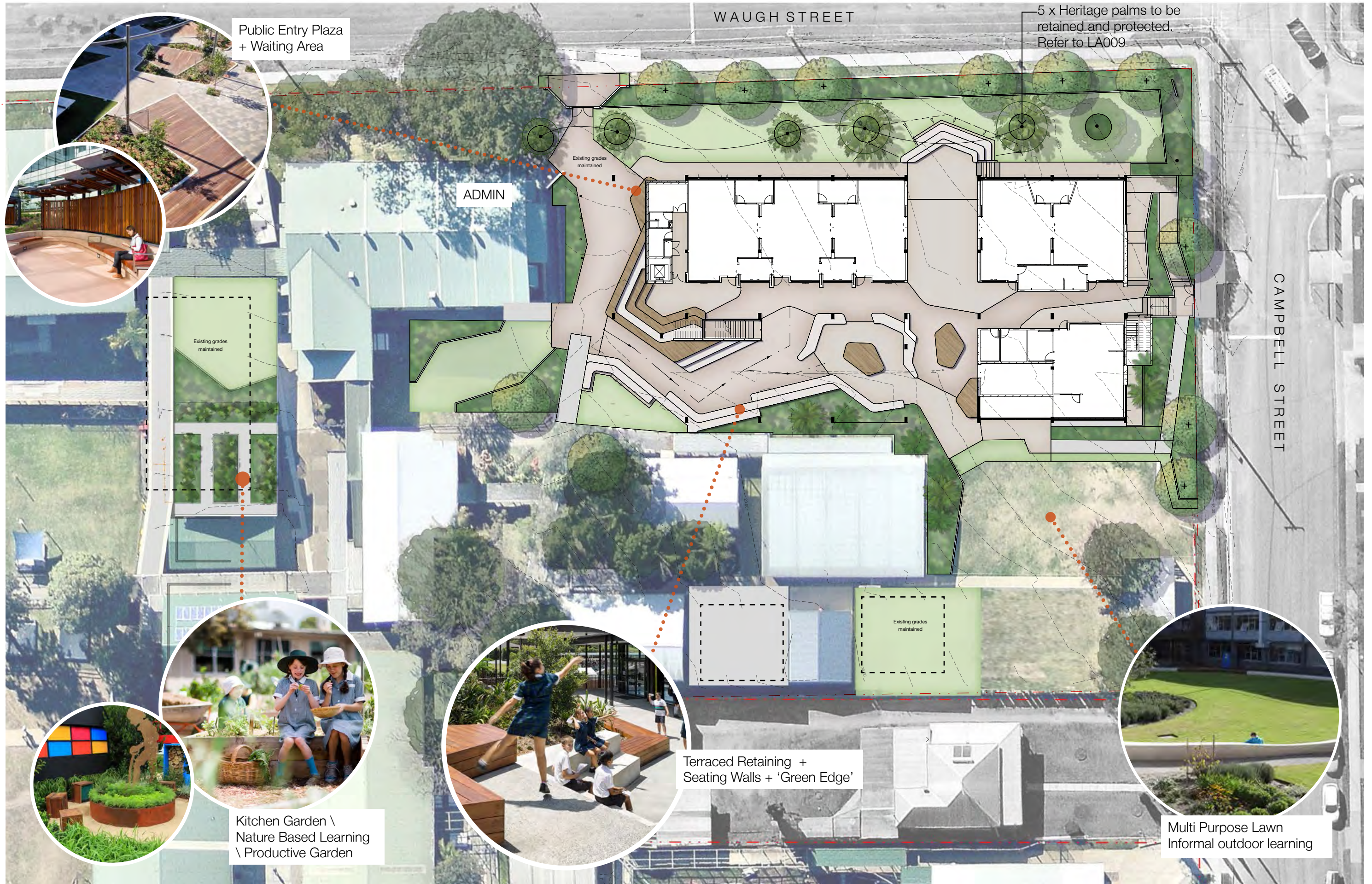
Covered outdoor learning areas with small and larger group seating areas and timber deck platforms



Open grassed areas / activity lawns for varied functionalities and programs







PAVING



INDICATIVE ONLY

EXPOSED AGGREGATE

Aggregate: 'Haleys Comet'

Finish: Light exposed (Max 1mm)

Full depth concrete colour varies

Supplier: Hanson or equivalent



EXPOSED AGGREGATE

Example of use



INDICATIVE ONLY

PLAIN GREY CONCRETE

Colour: CCS Brazil Nut

Finish varies



INDICATIVE ONLY

FULL DEPTH COLOURED CONCRETE

Colour: CCS Driftwood

Finish varies



INDICATIVE ONLY

PLAIN GREY CONCRETE

Colour: Portland Grey

Finish varies



TACTILE INICATORS

300mm x 300mm x 40mm

Type: Precast concrete paver

Colour: Black

Supplier: Chelmstone or equivalent


SEATING WALLS



CONCRETE SEATING WALLS

350mm (H) x 600-900mm (D) Length varies

Select Hardwood Timber





TIMBER DECK AND TERRACES

350mm (H) x 450-900mm (D) Length varies

Select Hardwood Timber



EDGES



150mm x 150mm

Plain Grey Concrete

FURNITURE



1800mm (L) x 755mm (H) x 530mm (D)

Frame: Cast Aluminium

Armrests and straps : Stainless Steel

Slats: Select Timber Hardwood

Supplier: MOS or equivalent



1800mm (L) x 450mm (H) x 530mm (D)

Frame: Cast Aluminium

Armrests: Stainless Steel

Slats: Select Timber Hardwood

Supplier: MOS or equivalent



600mm (L) x 605mm (D) x 1240mm (H)

Dual Bin Recycling Centre

Cladding: Stainless steel

Slats: Select Timber Hardwood

Supplier: MOS or equivalent

CLIENT



NSW
GOVERNMENT

PROJECT MANAGER



ARCHITECT

CONRAD
GARGETT

ANCHER
MORTLOCK
WOOLLEY

PROJECT

Wauchope Public School

INTERNAL PROJECT No:

16 398

DATE:

August 2017

©CONRAD GARGETT ANCHER MORTLOCK WOOLLEY®
mail@conradgargett.com.au ABN49 325 121 350
DO NOT SCALE DRAWING & VERIFY ALL DIMENSIONS AND LEVELS ON SITE

NORTH

DRAWING

Material Palette - Hardscape

REV

DESCRIPTION

DA

DATE

01/09/17

APPD

KNW

DRAWING No

LA007

REV:

A

TREES



Cupaniopsis anacardioides
Tuckeroo
15m max.H x 5-10m spread



Elaeocarpus reticulatus
BLUEBERRY ASH
10m max.H x 4m spread



Lophostemon confertus
BRUSH BOX
15m max.H x 5-10m spread



Tristaniopsis laurina
Water Gum
20m max.H x 10m spread

SHRUBS



Cyathea cooperi
TREE FERN
45L min. pot size



Lomandra longifolia
MAT-RUSH
140mm min. pot size
3 Per m2



Doryanthes excelsa
GYMEA LILY
200mm min. pot size



Hardenbergia violacea
FALSE SARSPARILLA
140mm min. pot size
4 per m2



Poa poiformis
BLUE TUSOCK GRASS
140mm min. pot size
4 per m2



Banksia spinulosa
HAIRPIN BANKSIA
200mm min. pot size
3 per m2

GROUND COVERS



Cissus antarctica
KANGAROO VINE
140mm min. pot size
4 per m2



Myoporum parvifolium
Creeping Boobialla
140mm min. pot size
4 per m2



Viola hederacea
NATIVE VIOLET
140mm min. pot size
4 per m2






Hibbertia scandens
TWINING GUNEA FLOWER
140mm min. pot size
4 per m2

CLIMBERS



Pandorea pandorana
WONGA WONGA VINE
140mm min. pot size

LEGEND

-  Estimated Tree Protection Zone (TPZ).
As per AS 4970-2009 Protection of trees on
development Sites. To be confirmed by Arborist.
-  Additional 1m allowance to estimated TPZ for
heritage palms
-  Trees to be removed

